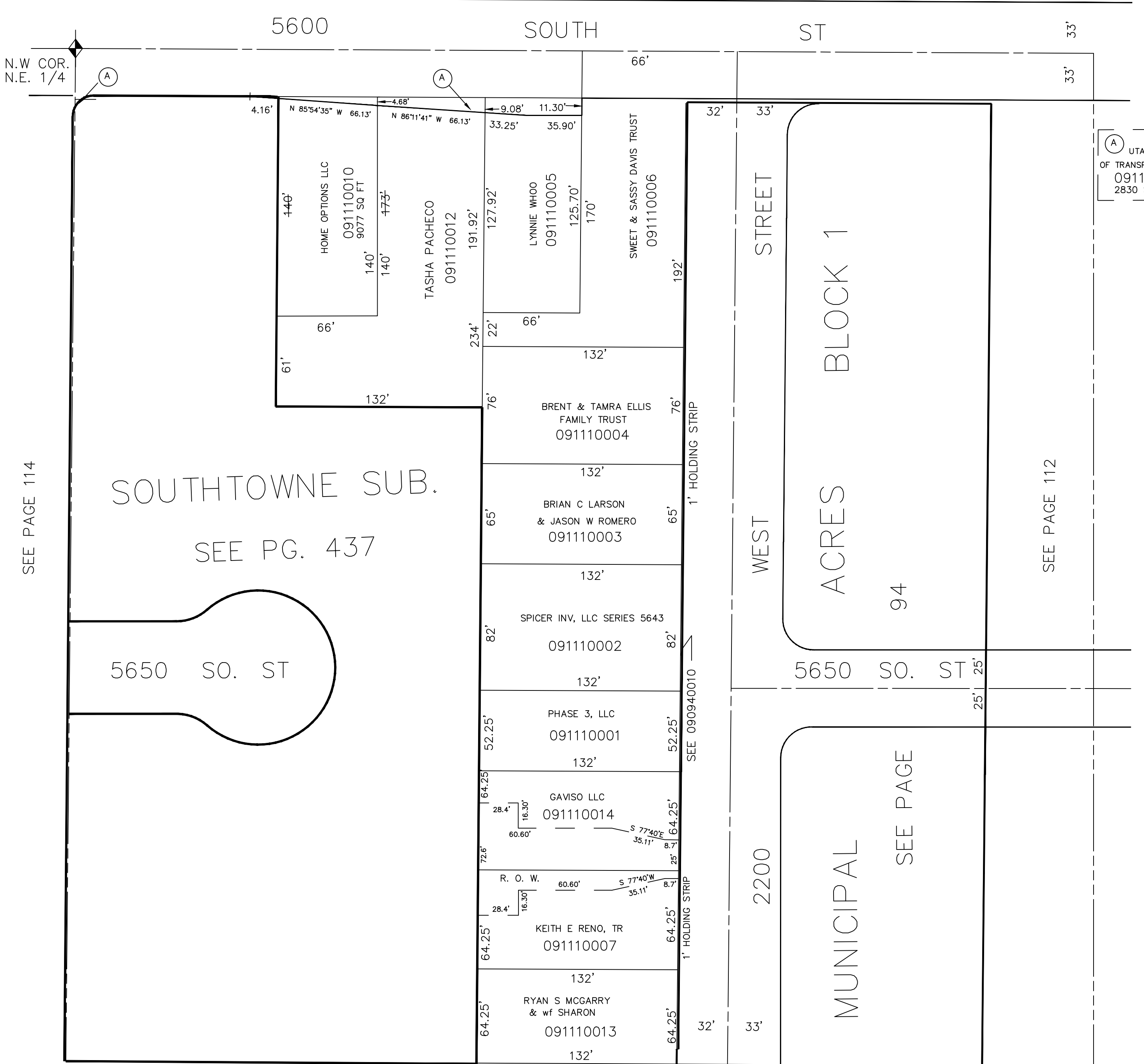


PART OF THE N.W. 1/4 OF N.W. 1/4 OF N.E. 1/4 OF  
SECTION 23, T.5N., R.2W., S.L.B. & M.

IN ROY CITY  
SCALE 1' = 50'

TAXING UNIT: 41

SEE PAGE 1



UTAH DEPT  
OF TRANSPORTATION  
091110015  
2830 SQ FT

SEE PAGE 114

SOUTH TOWNE SUB.

SEE PG. 437

5650 SO. ST

WEST STREET

ACRES BLOCK 1

WEST

94

5650 SO. ST

2200 MUNICIPAL

SEE PAGE

SEE PAGE 112

SEE PAGE 93